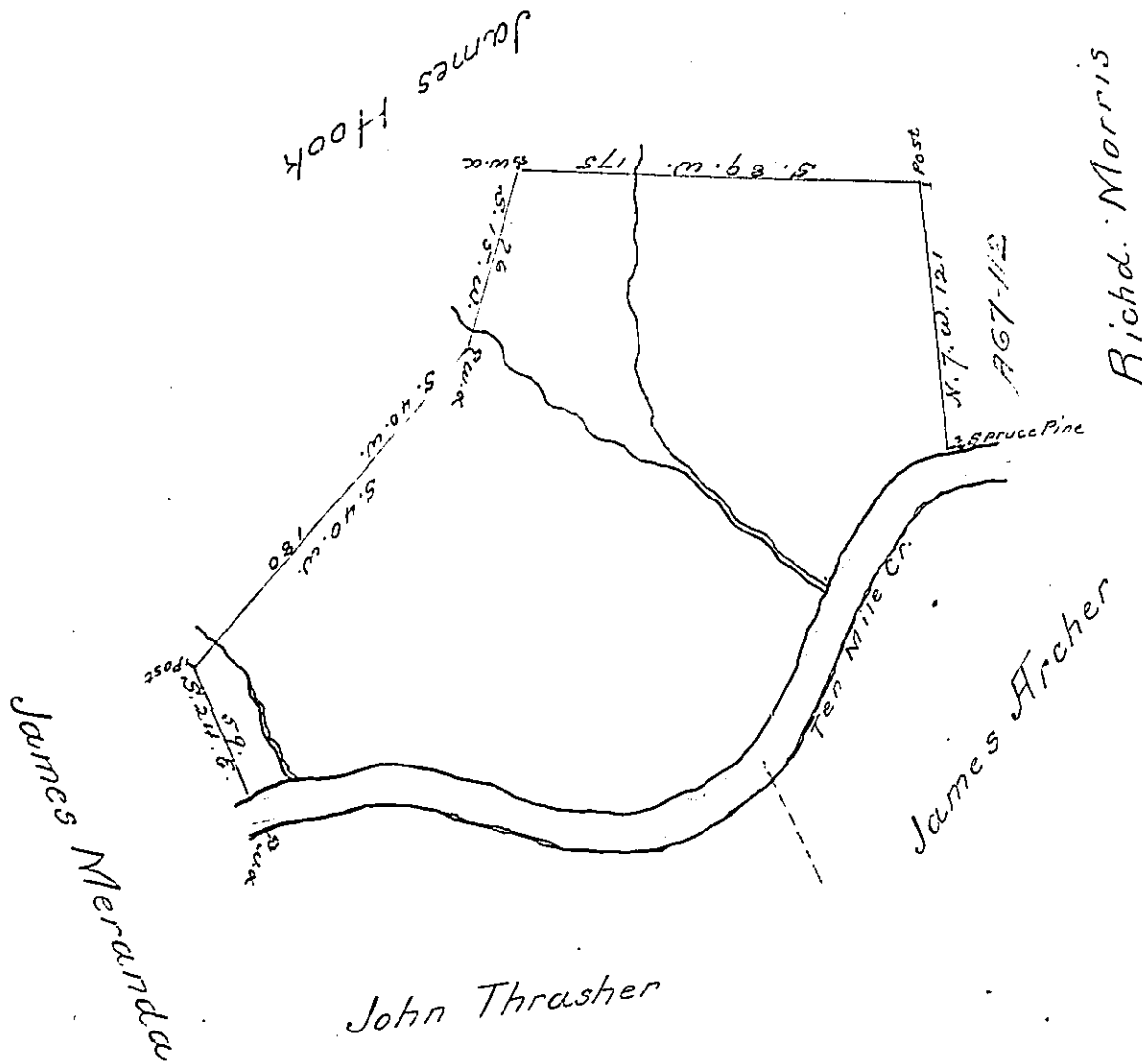


Course & Dist
down Creek

N. 79. E. 48
S. 83. E. 106
N. 63. E. 87
N. 26. E. 117
N. 67. E. 21
<hr/>
379



The above is a Draught of a Tract of Land Situate in Washington County on the North side of the South Fork of Ten mile Creek Surveyd. May 17th 1786 in pursuance of a Warrant Granted to John Calhoun the ^{21st} ~~first~~ day of June Anno Domini 1773 called Entertainment Containing 346 acres and an half with 6pcent allowance for Roads &c.

John Lukens Esqr. S. G.
Wt No. 11.

Jno. H. Redick for
David Redick D.S.

Mr Lynch you have a line or note in your possession put into your hand in Febr. 1785 requesting you to pay respect to returns made as above

David Redick

7th Decr. 1786

IN TESTIMONY that the above is a copy of the original remaining on file in the Department of Internal Affairs of Pennsylvania, made conformably to an Act of Assembly approved the 16th day of February, 1833, I have hereunto set my Hand and caused the Seal of said Department to be affixed at Harrisburg, this seventh day of August 1900

James W. Pitts
Secretary of Internal Affairs.